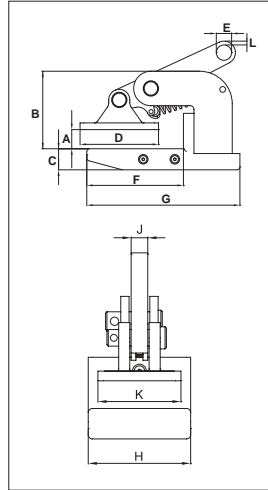


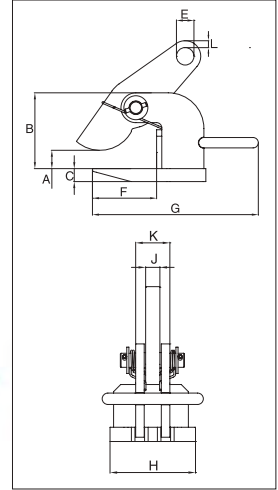


LIFTING CLAMPS & MAGNETS

IPHNM10



IPH10



**For Horizontal Lift and Transfer with Pretension System**

- Available in capacities of .5 through 12 metric tons (higher Working Load Limits are available upon request).
- Jaw openings available: 0 to 120mm.
- Welded alloy steel body for strength and smaller size. Forged alloy components, where required.
- Individually Proof Tested to 2 times the Working Load Limit with certification.
- Company name (Crosby IP), logo, Working Load Limit and jaw opening permanently stamped on body.
- Each product is individually serialized, with the serial number and Proof Load test date stamped on body. User manual with test certificate is included with each clamp.
- Maintenance and repair kits are available.

*Load Rated*

**Model IPHNM10**

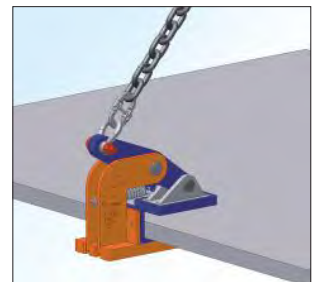
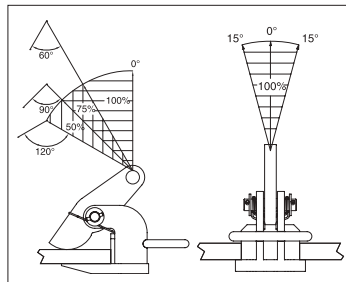
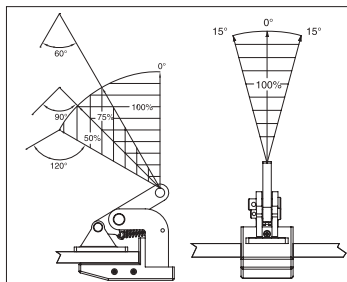
Model	Working Load Limit (Per Pair) (t)*	Stock No.	Weight Each (kg)	Dimensions (mm)										
				Jaw A	B	C	D	E	F	G	H	J	K	L
IPHNM10	0.5	2703287	2.0	0 - 20	81	22	82	16	101	160	74	12	60	4
IPHNM10	1	2703288	3.5	0 - 35	93	30	92	16	103	164	74	12	60	7
IPHNM10	2	2703290	7.5	0 - 30	139	30	131	22	166	245	100	20	74	9
IPHNM10J	2	2703291	8.0	30 - 60	169	30	131	22	166	245	100	20	74	9

\* Design Factor based on EN 13155 and ASME B30.20.

**Model IPH10 / IPH10J: With Spring Loaded Tension, Magnets and Handle**

Model	Working Load Limit (Per Pair) (t)*	Stock No.	Weight Each (kg)	Dimensions (mm)										
				Jaw A	B	C	E	F	G	H	J	K	L	
IPH10	0.5+	2703297	1.8	0 - 20	86	12	16	103	150	60	12	27	4	
IPH10	1+	2703298	2.5	0 - 35	100	16	16	103	150	60	12	31	7	
IPH10	2	2703522	5.5	0 - 60	117	16	22	109	256	110	20	40	9	
IPH10	3	2703523	7.5	0 - 60	117	20	26	109	266	120	20	48	11	
IPH10	4.5	2703524	10.5	0 - 60	132	25	30	104	280	130	20	48	12	
IPH10	6	2703525	13.0	0 - 60	143	25	36	123	320	130	20	48	14	
IPH10	9	2703526	18.5	0 - 60	157	30	43	133	330	140	25	62	16	
IPH10	12	2703527	21.5	0 - 60	172	30	47	141	353	150	25	62	17	
<b>With larger jaw opening #</b>														
IPH10J	3	2703533	9.0	60 - 120	177	20	26	109	266	120	20	48	9	
IPH10J	4.5	2703534	12.0	60 - 120	192	25	30	104	280	130	20	48	11	
IPH10J	6	2703535	15.0	60 - 120	203	25	36	123	320	130	20	48	12	
IPH10J	9	2703536	20.5	60 - 120	217	30	43	133	330	140	25	62	14	
IPH10J	12	2703537	24.0	60 - 120	232	30	47	141	353	150	25	62	16	

\* Design Factor based on EN 13155 and ASME B30.20.+ No handle or magnets. # Larger Working Load Limits available.





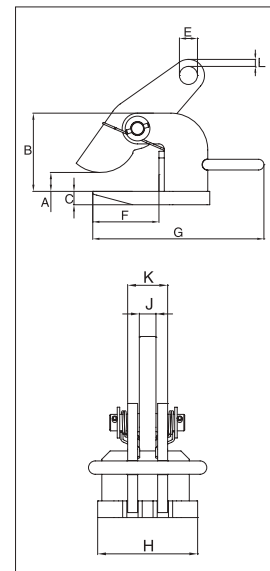
## LIFTING CLAMPS & MAGNETS

### IPH10E



#### For horizontal lifting and transfer

- Available in capacities of 2.0 thru 25 metric tons.
- Wide variety of jaw openings available: 0 to 120mm.
- Welded alloy steel body for strength and smaller size. Forged alloy, components where required.
- Equipped with handle for easy placement.
- Individually Proof Tested to 2 times the Working Load Limit with certification.
- Company name (CrosbyIP), logo, Working Load Limit and jaw opening permanently stamped on body.
- Each product is individually serialized, with the serial number and Proof Load test date stamped on body. User manual with test certificate is included with each clamp.
- Maintenance and repair spare kits are available.



### Model IPH10E

Load Rated

Model	Working Load Limit (Per Pair) (t)*	Stock No.	Weight Each (kg)	Dimensions (mm)									
				Jaw A	B	C	E	F	G	H	J	K	L
IPH10E	2	2703542	5.5	0 - 60	117	16	22	109	256	110	20	40	9
IPH10E	3	2703543	7.5	0 - 60	117	20	26	109	266	120	20	48	11
IPH10E	4.5	2703544	10.5	0 - 60	132	25	30	104	280	130	20	48	12
IPH10E	6	2703545	13	0 - 60	143	25	36	123	320	130	20	48	14
IPH10E	9	2703546	18.5	0 - 60	157	30	43	133	330	140	25	62	16
IPH10E	12	2703547	21.5	0 - 60	172	30	47	141	353	150	25	62	17

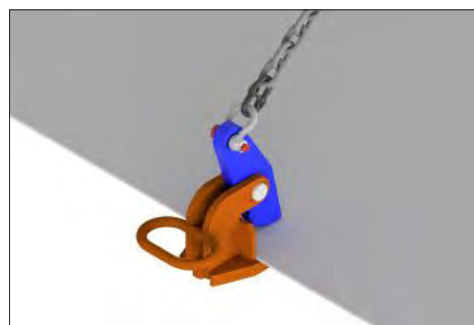
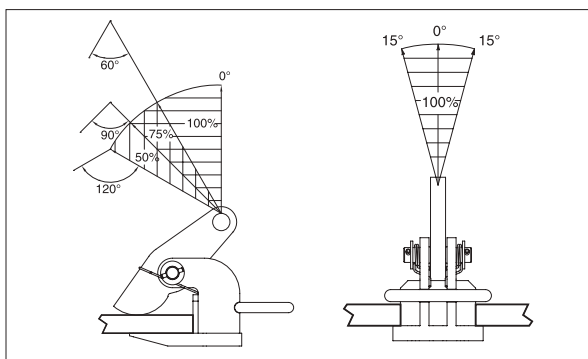
\* Design Factor based on EN 13155 and ASME B30.20.

### Model IPH10JE

Model	Working Load Limit (Per Pair) (t)*	Stock No.	Weight Each (kg)	Dimensions (mm)									
				Jaw A	B	C	E	F	G	H	J	K	L
IPH10JE	3	2703553	9.0	60 - 120	177	20	26	109	266	120	20	48	11
IPH10JE	4.5	2703554	12.0	60 - 120	192	25	30	104	280	130	20	48	12
IPH10JE	6	2703555	15.0	60 - 120	203	25	36	123	320	130	20	48	14
IPH10JE	9	2703556	20.5	60 - 120	217	30	43	133	330	140	25	62	16
IPH10JE	12	2703557	24.0	60 - 120	232	30	47	141	353	150	25	62	17

\* Design Factor based on EN 13155 and ASME B30.20.

12



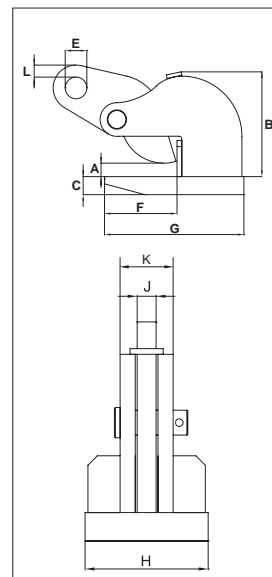


IPHOZ



**For Horizontal Lifting and Transfer**

- Available in capacities of .75 through 15 metric tons (higher Working Load Limits are available upon request).
- Wide variety of jaw openings available: 0 to 60mm.
- Welded alloy steel body for strength and smaller size. Forged alloy, components where required.
- Equipped with handle for easy placement.
- Individually Proof Tested to 2 times the Working Load Limit with certification.
- Company name (Crosby IP), logo, Working Load Limit and jaw opening permanently stamped on body.
- Each product is individually serialized, with the serial number and Proof Load test date stamped on body. User manual with test certificate is included with each clamp.
- Maintenance and repair kits are available.

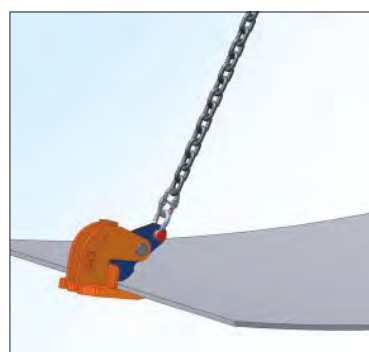
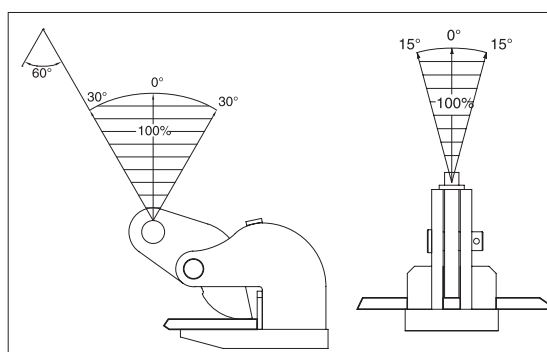


Load Rated

**Model IPHOZ**

Model	Working Load Limit (Per Pair) (t)*	Stock No.	Weight Each (kg)	Dimensions (mm)									
				Jaw A	B	C	E	F	G	H	J	K	L
IPHOZ	0.75	2705401	3.0	0 - 30	94	16	16	70	118	81	12	31	12
IPHOZ	1.5	2705402	5.5	0 - 45	133	16	22	125	192	100	16	36	12
IPHOZ	3	2705403	8.0	0 - 45	137	20	26	125	200	120	20	48	10
IPHOZ	4.5	2705404	9.5	0 - 45	138	25	30	126	220	120	20	50	10
IPHOZ	6	2705405	15.5	0 - 60	171	30	36	135	235	130	20	56	20
IPHOZ	9	2705406	25.0	0 - 60	211	30	43	166	276	160	25	62	20
IPHOZ	12	2705407	29.0	0 - 60	217	40	47	168	294	190	25	62	19
IPHOZ	15	2705408	36.5	0 - 60	220	40	47	183	317	250	25	62	22

\*Design Factor based on EN 13155 and ASME B30.20.





IPBC



**For Horizontal Transfer - with Pretension System**

- Available in capacities of 1 through 4.5 metric tons (Higher Working Load Limits are available upon request).
- Jaw openings available: 0 to 40mm.
- Welded alloy steel body for strength and smaller size. Forged alloy, components where required.
- Equipped with handle for easy placement.
- Individually Proof Tested to 2 times the Working Load Limit with certification.
- Company name (CrosbyIP), logo, Working Load Limit and jaw opening permanently stamped on body.
- Each product is individually serialized, with the serial number and Proof Load test date stamped on body. User manual with test certificate is included with each clamp.
- Maintenance and repair kits are available.

IPHGUZ

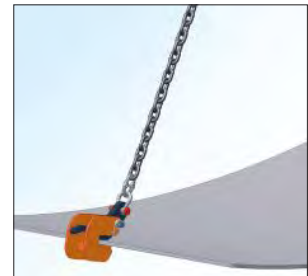
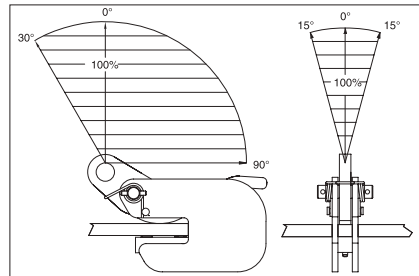
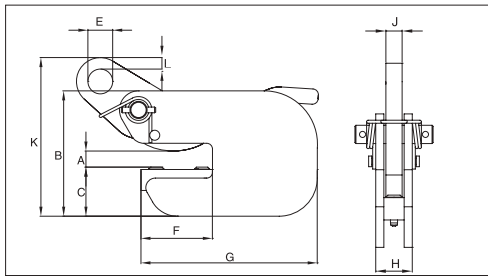


Load Rated

**Model IPBC**

Model	Working Load Limit (t)*	Stock No.	Weight Each (kg)	Dimensions (mm)									
				Jaw A	B	C	E	F	G	H	J	K	L
IPBC	1	2700410	3.5	0 - 20	132	52	26	75	185	36	16	182	12
IPBC	2	2700411	6.5	0 - 25	152	62	30	82	210	49	20	218	15
IPBC	3	2700412	8.5	0 - 25	157	66	30	82	210	57	20	225	15

\* Design Factor based on EN 13155 and ASME B30.20.



**Model IPHGUZ: Universal Lifting Eye / Model IPHGZ: Fixed Hoisting Eye**

Model	Working Load Limit (t)*	Stock No.	Weight Each (kg)	Dimensions (mm)								
				Jaw A	B	C	D	E	F	G	J	K
IPHGUZ	1.5	2705455	9.0	0 - 25	110	232	287	70	139	90	20	16
IPHGUZ	3	2705456	19.9	0 - 40	119	253	348	75	175	120	25	20
IPHGUZ	4.5	2705457	30.0	0 - 40	119	301	370	80	175	155	30	44
<b>Fixed Hoisting Eye</b>												
IPHGZ	0.75	2705451	4.0	0 - 25	82	148	206	50	99	98	12	22
IPHGZ	1.5	2705452	7.3	0 - 25	110	200	250	50	118	90	20	28
IPHGZ	3	2705453	12.3	0 - 40	120	227	305	70	148	120	25	32
IPHGZ	4.5	2705454	25.0	0 - 40	120	284	381	70	181	155	30	40

\* Design Factor based on EN 13155 and ASME B30.20.

